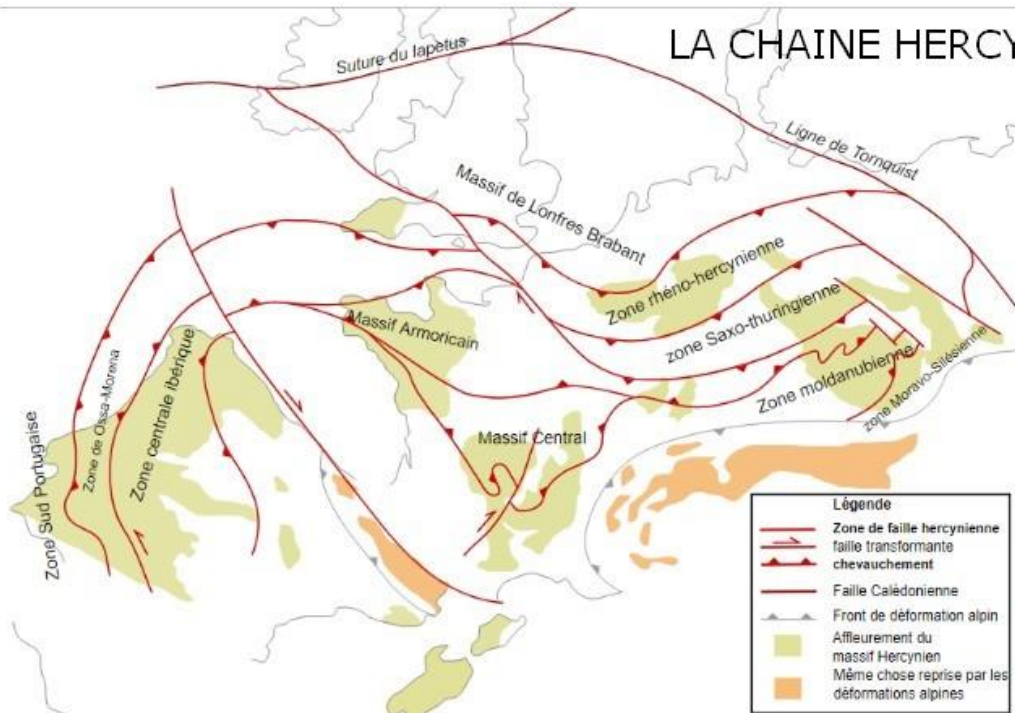
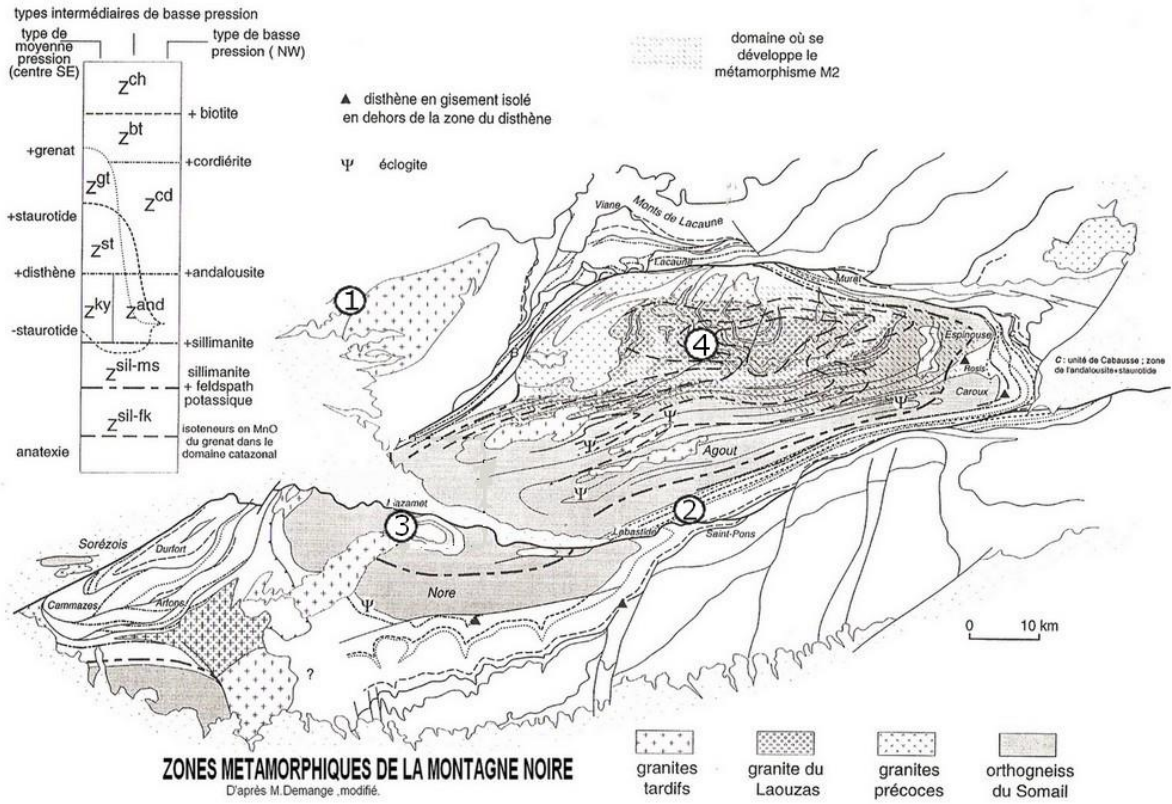
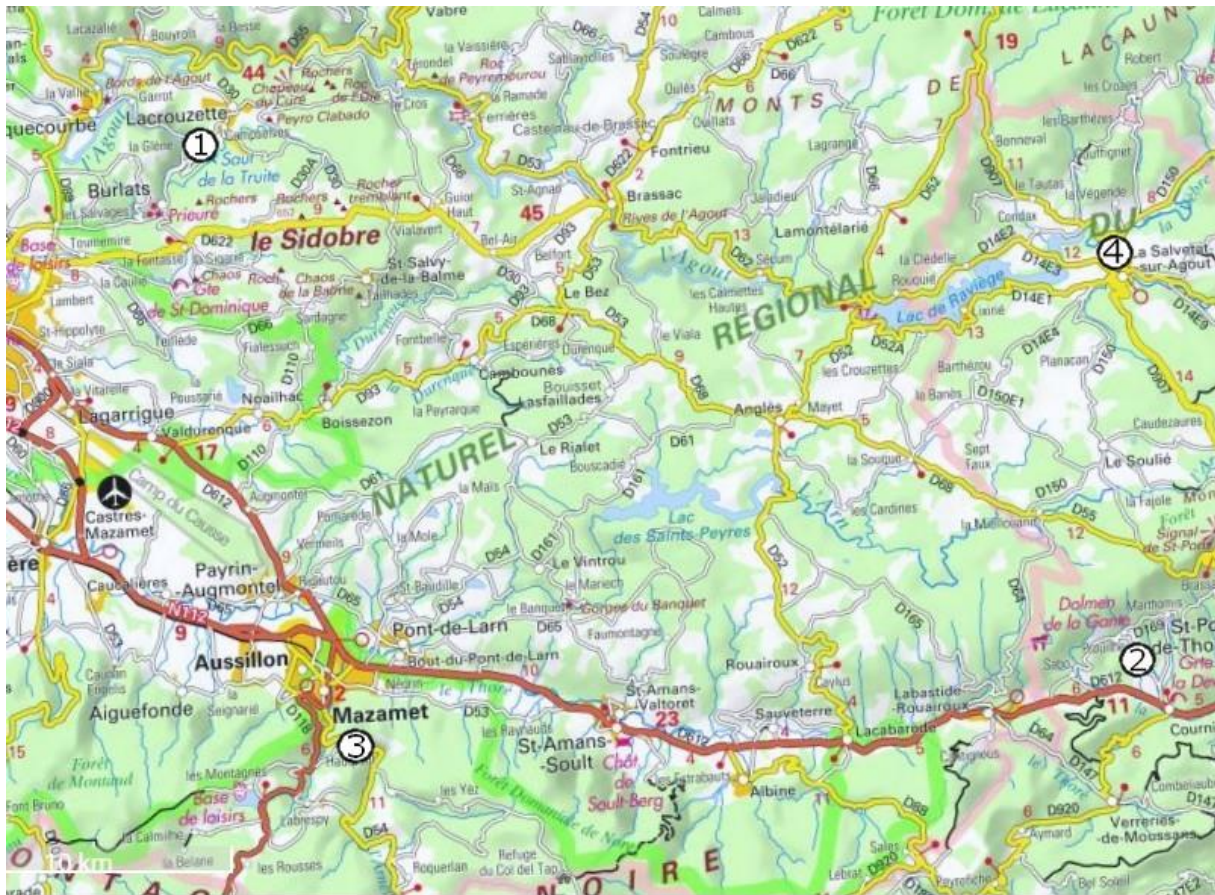


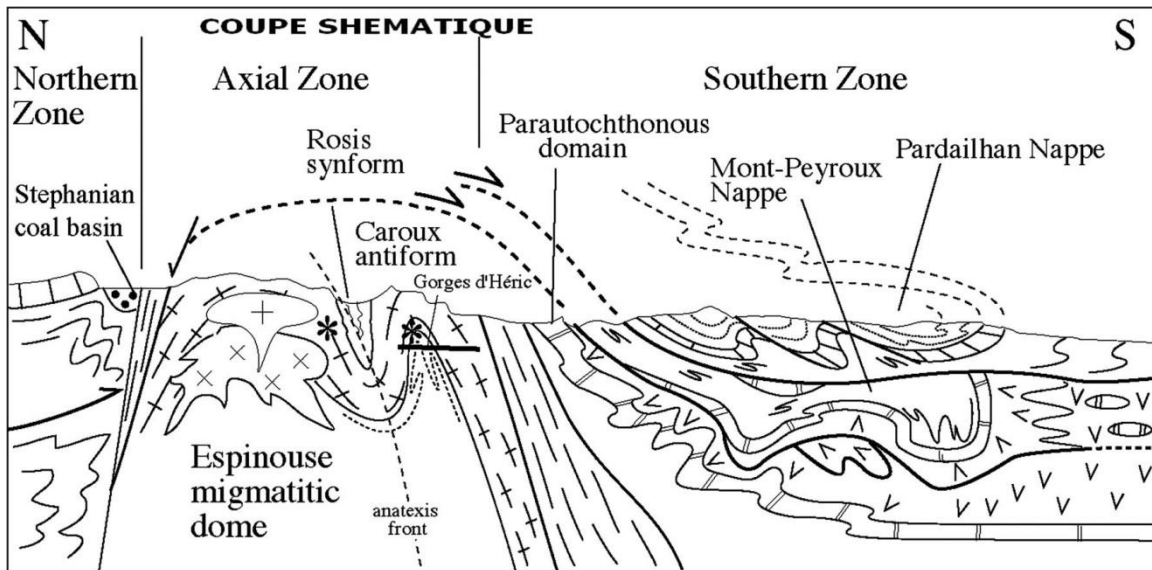
LA CHAÎNE HERCYNIENNE





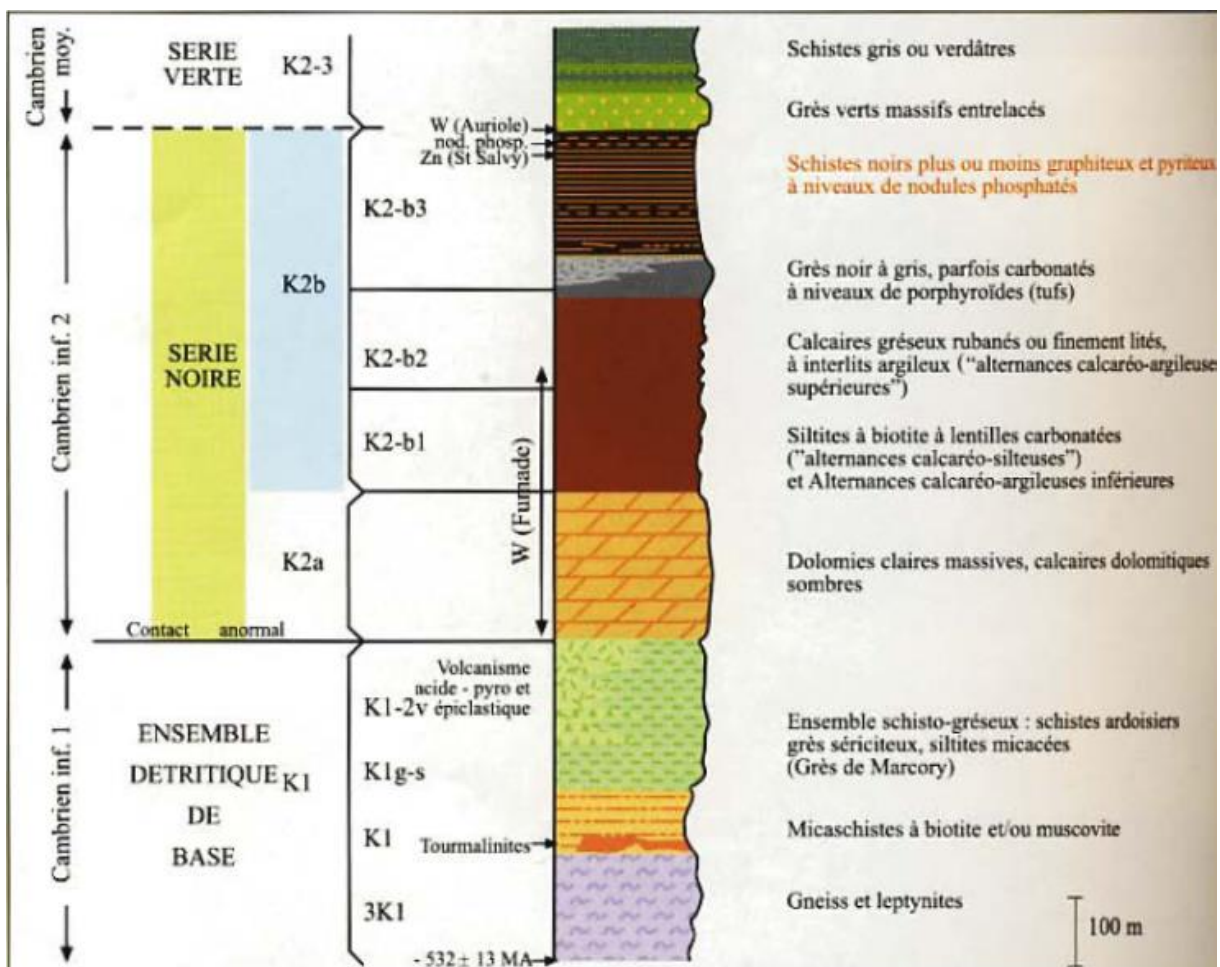
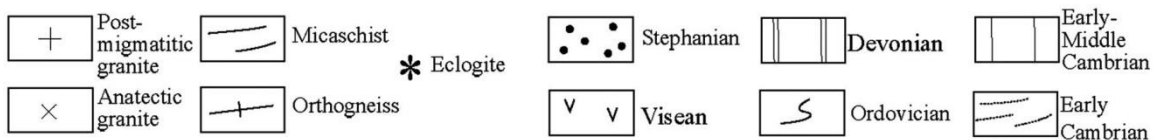






Axial Zone

Southern and Northern Zones



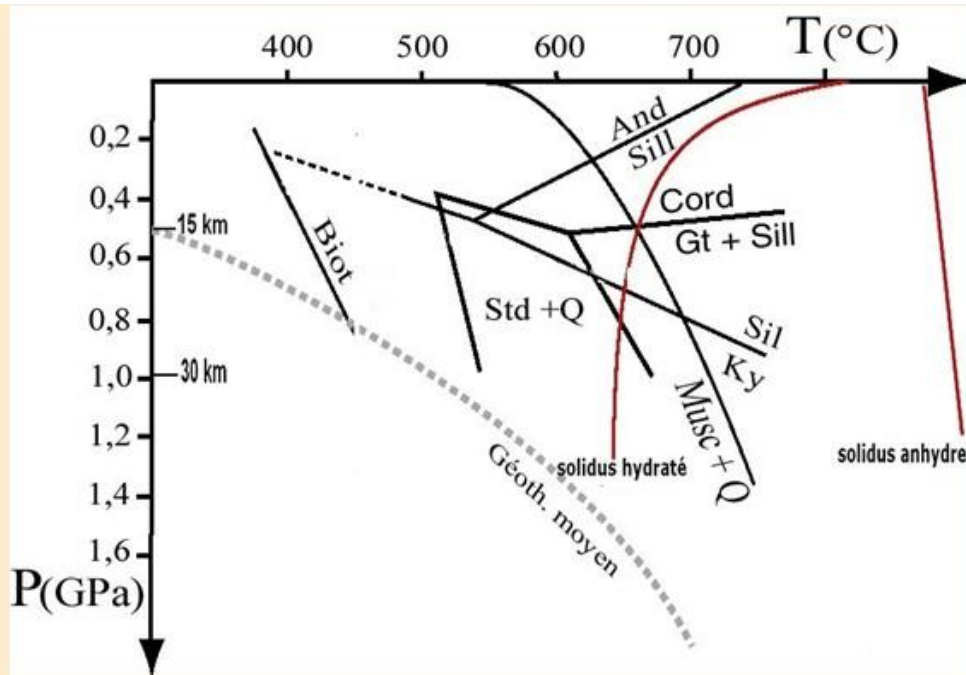


Diagramme pression /température montrant les domaines de stabilité de quelques minéraux de roches silico-alumineuses: And:andalouite-Biot:biotite- Std:staurotide - Cord:cordiérite- Sill:sillimanite - Ky:kyanite(=disthène) Musc:muscovite -Q:quartz- Gt:grenat.

Le solidus représente la limite de la fusion partielle. 1 GPa(gigapascal)=10 Kbars.